



JOINT-STOCK COMPANY  
«ZELENODOLSK PLANT  
NAMED AFTER A.M.GORKY»



# JSC «AK BARS» HOLDING COMPANY

tel.: + 8(843) 511-45-45

E-mail: [abh@abh.ru](mailto:abh@abh.ru)

[www.abh.ru](http://www.abh.ru)

is a managing company of a group of industrial, building, agricultural and trading enterprises, and at present is one of the strongest inter-industry multi-specialized holdings in the Russian Federation.

more than  
**31,000**  
EMPLOYEES



(more than  
**1 500 000 000** \$  
INCOME INC.VAT)

**8** CITIES  
OF THE REPUBLIC OF  
TATARSTAN

**5** BRANCHES  
OF ECONOMICS  
OF THE REPUBLIC OF  
TATARSTAN

**80**  
enterprises and  
organizations



## AGRO-INDUSTRIAL COMPLEX:



FOOD,  
GREEN PROCESSING  
INDUSTRY, AGRO-FIRMS

**800** mln. \$  
turnover

## STEEL CONSTRUCTION

Weight of one  
assembly component  
of steel construction is  
up to **380** tons

**20,2** mln. \$  
turnover

## SHIPBUILDING



**1500** and more ships and  
vessels built

**322** mln. \$  
turnover



АК БАРС ХОЛДИНГ

## TOOL ENGINEERING



**276,7** mln. \$  
turnover

## BUILDING



**216,3** mln. \$  
turnover

Production of steel structures,  
concrete products, bricks, wood conversion



# JSC «SHIPBUILDING CORPORATION «AK BARS»

The corporation was established through the sponsorship of Joint-Stock Company «Holding company «Ak Bars».

Today, it incorporates the following enterprises:

- «Zelenodolsk Plant named after A.M. Gorky», JSC
- «Kazan plant «Elektropribor», JSC
- «Ak Bars Metall», LLC
- «Adria Winch Zelenodolsk», LLC
- «VolgaTatSudoremont», OOO

THE FOCAL AREAS OF THE CORPORATION ARE AS FOLLOWS:

- DESIGN ENGINEERING
- SHIPBUILDING
- COMPONENT PARTS MANUFACTURING
- SHIP REPAIR AND SERVICE



CIVIL SHIPBUILDING



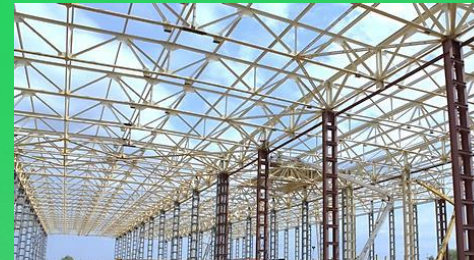
NAVAL SHIPBUILDING



DESIGN ENGINEERING



TOOL ENGINEERING



METAL STRUCTURES



MACHINE-BUILDING AND METALLURGY





**JSC «ZELENODOLSK PLANT NAMED AFTER A.M.GORKY»  
IS ONE OF THE STRONGEST AND STRATEGICALLY VALUABLE  
SHIPBUILDING COMPANIES IN RUSSIA**

**FOUNDED IN 1895**

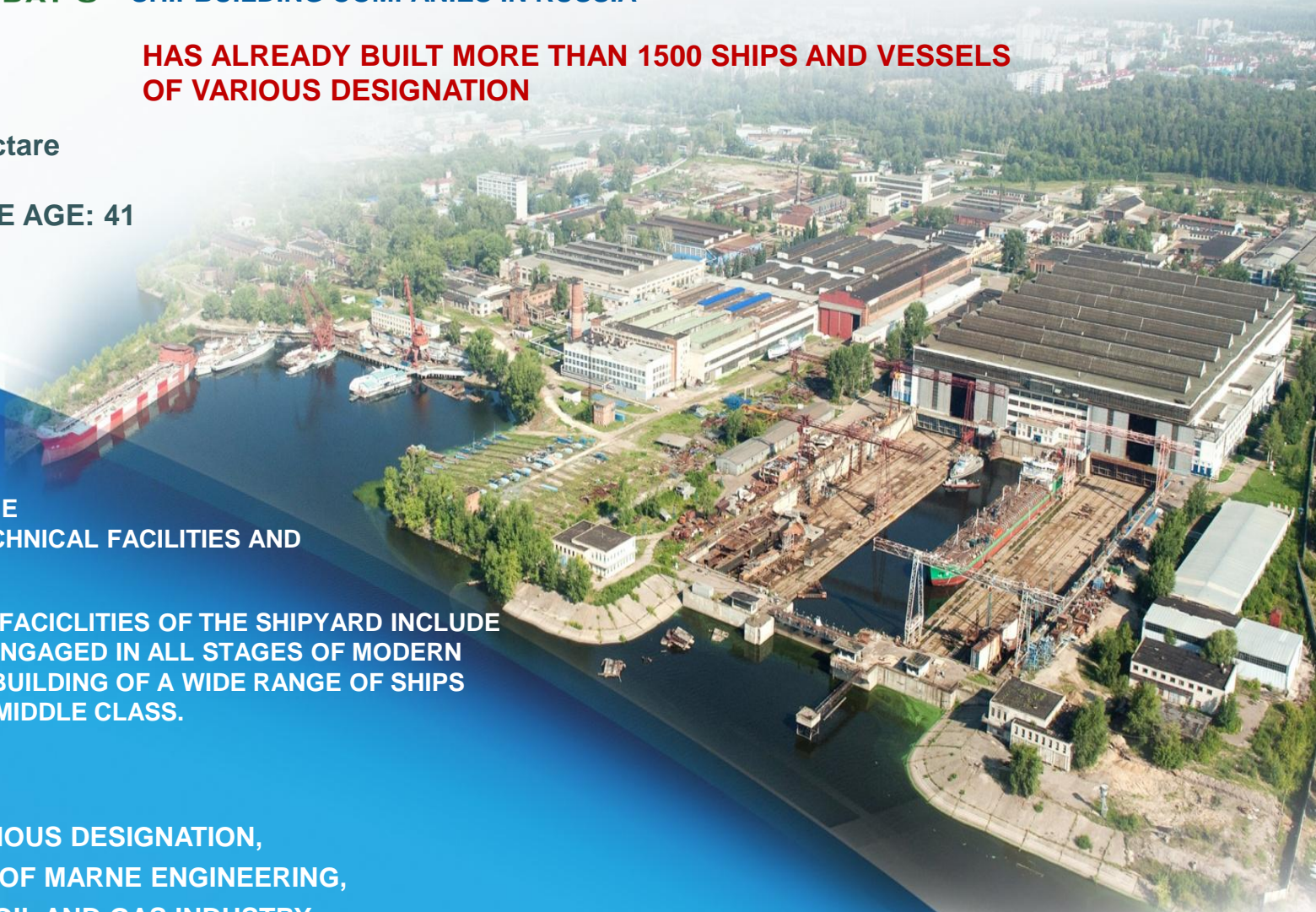
- **AREA OCCUPIED: 92 hectare**
- **EMPLOYEES: 5300**
- **AN AVERAGE EMPLOYEE AGE: 41**

**HAS ALREADY BUILT MORE THAN 1500 SHIPS AND VESSELS  
OF VARIOUS DESIGNATION**

- **THE SHIPYARD POSSESSES THE  
UNIQUE PRODUCTION AND TECHNICAL FACILITIES AND  
INTELLECTUAL POTENTIAL**
- **PRODUCTION AND TECHNICAL FACILITIES OF THE SHIPYARD INCLUDE  
A COMPLEX OF WORKSHOPS ENGAGED IN ALL STAGES OF MODERN  
SHIPBUILDING, WHICH ALLOW BUILDING OF A WIDE RANGE OF SHIPS  
AND VESSELS OF SMALL AND MIDDLE CLASS.**

#### **PRODUCTION:**

**SHIPS AND VESSELS OF VARIOUS DESIGNATION,  
WIDE RANGE OF PRODUCTS OF MARINE ENGINEERING,  
VARIETY OF EQUIPMENT FOR OIL AND GAS INDUSTRY,  
PRODUCTS OF FERROUS AND NON-FERROUS METALLURGY, TITANIUM CASTINGS,  
LARGE-SIZE METAL STRUCTURES, SHIPBOARD AND CABINET-TYPE FURNITURE.**



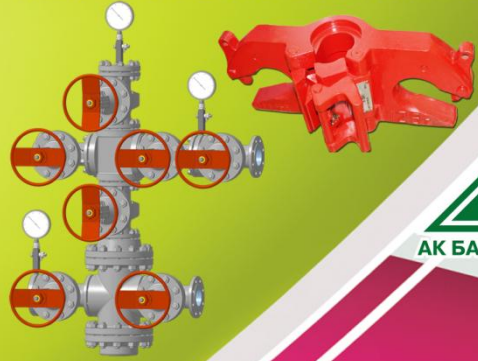


THE COMPANY HAS A DIVERSIFIED PRODUCTION, BUT ITS MAIN PURPOSE IS SHIPBUILDING. ORGANIZATION OF PRODUCTION PROCESS ENABLES, SO AS TO SAY, TO "SATURATE" THE SHIPBUILDING BY COMBINING MECHANICAL ENGINEERING AND FOUNDRY PROVIDING FULL TECHNOLOGICAL CYCLE OF CONSTRUCTION.

LARGE SIZE METAL CONSTRUCTION



MECHANICAL ENGINEERING



SHIPBUILDING



METALLURGY







## TECHNOLOGY USED:

THE SHIPYARD POSSESSES CUTTING-EDGE TECHNOLOGIES AND EQUIPMENT, STATE-OF-THE-ART MANAGEMENT AND QUALITY CONTROL SYSTEMS, AND SKILLED WORKFORCE.

THE SHIPYARD PRODUCES A WIDE RANGE OF ITEMS OF DIFFERENT PURPOSES WITH HIGH EXPORT POTENTIAL.



PLASMA CUTTING LINE FOR METAL CUTTING



WATERJET CUTTING LINE



3D SHEET BENDING PRESS



PROFILE CUTTING LINE



SHEET METAL CLEANING LINE



COLD HARDENING MIXTURE LINE



MACHINE-TOOL USE AREA, SHOP NO.9

DUE TO MODERNIZATION AND TECHNICAL UPGRADING OF THE SHIPYARD CAPABILITIES OF METAL MACHINING AND CONSTRUCTION OF LARGE-SIZE METAL STRUCTURES HAVE BEEN ENHANCED.

**30** THOUSAND TONS – ANNUAL METAL WORKING CAPABILITY

THE SHIPYARD HAS INTRODUCED ADVANCED TECHNICAL AND ORGANIZATIONAL SOLUTIONS OF FLOW-LINE AND POSITIONAL CONSTRUCTION OF VESSELS STARTING FROM PUTTING METAL INTO PRODUCTION TO DELIVERY OF COMPLETED VESSEL.

BLOCK CONSTRUCTION OF VESSELS IS PERFORMED ON COVERED BUILDING BERTHS FITTED WITH POWERFUL CRANES, BASIN DOCK FOR LAUNCHING OF VESSELS EQUIPPED WITH DEFROSTING SYSTEM FOR EMPLOYMENT IN WINTER - TIME



LASER CUTTER



FLAT SECTIONS MANUFACTURING LINE



MICROPANELS ASSEMBLY AND WELDING LINE

IN 1997 THE SHIPYARD MASTERED A NEW AREA OF ACTIVITY- PRODUCTION OF LARGE-SIZE METAL STRUCTURES. THE SHIPYARD WAS THE FIRST IN RUSSIA TO INTRODUCE THE METHOD OF MANUFACTURING METAL STRUCTURES FOR BRIDGE CONNECTIONS USING LARGE-SIZE BLOCKS WEIGHING UP TO 120 TONS EACH.





# NAVAL CONSTRUCTION



COUNTER-SABOTAGE SHIP  
of 21980 Project



PATROL SHIP  
of 22160 Project



SMALL MISSILE SHIP  
of 21632 Project «TORNADO»



«GEPARD - 3.9» FRIGATE

OVER THE YEARS OF ITS ACTIVITY THE  
PLANT HAS CONSTRUCTED MORE THAN  
1500 SHIPS AND VESSELS OF DIFFERENT  
PURPOSES, INCLUDING MORE THAN  
600 NAVAL SHIPS.





# CIVIL SHIPBUILDING

THE SHIPYARD HAS ALWAYS BEEN THE LEADER IN THE FIELD OF IMPLEMENTATION OF THE ADVANCED TECHNOLOGIES OF CONSTRUCTION OF HIGH-SPEED VESSELS AND SHIPS OF LIGHT ALLOYS

**NOWADAYS IT IS THE ONLY SHIPBUILDING PLANT IN RUSSIA UNDERTAKING THE SERIAL CONSTRUCTION OF HIGH-SPEED PASSENGER VESSELS**



HIGH-SPEED PASSENGER VESSEL of A45 project



HIGH-PASSENGER VESSEL of A45-1 project



PASSENGER VESSEL of A217-1 project

HIGH-SPEED PASSENGER VESSEL of A145 project



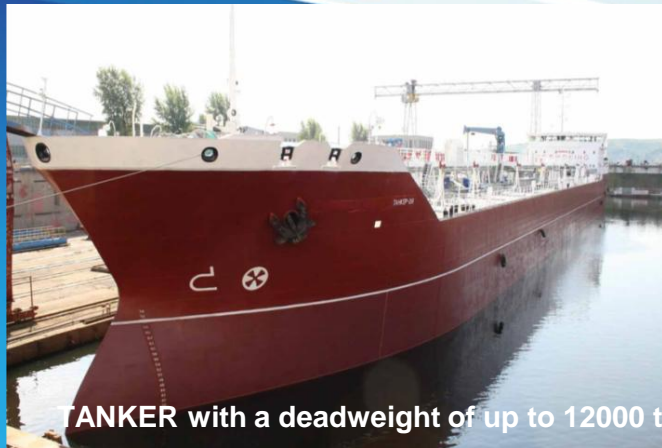
A145 is an innovative Russian project in the field of fast sea passenger transportation





# CIVIL SHIPBUILDING

Tanker "Almetyevsk" was included in the list of the best ships 2013 (Significant Ships of 2013) published by the Royal society of naval architects (RINA Royal Institution of Naval Architects).







# METALLURGICAL PRODUCTION

CONSISTS OF:

■ **TITANIUM FOUNDRY - ONE OF THE LARGEST IN THE WORLD FOR PRODUCING SHAPED TITANIUM CASTINGS,**


capable of making castings of complex configuration weighing up to 2750 kg, with a wall thickness of 3 mm and more, diameter of up to 2.5 m and height up to 1.5 m, of any titanium alloys, and up to 700 tons per year.

■ **STEEL FOUNDRY,**

producing castings of steel of various grades weighing up to 3.0 tons and up to 6000 tons per year.

■ **NON-FERROUS FOUNDRY,**

producing castings of tin and aluminum bronze, brass, aluminum alloys weighing up to 500 kg and up to 600 tons per year.



The workshop is equipped with 9 vacuum furnaces for titanium smelting, allowing melting of all kinds of titanium alloys. «NEVA - 5» vacuum furnace, one of the largest in the world intended for melting and casting of titanium alloys.

These castings are widely used in many strategic industry sectors: shipbuilding, aviation, aerospace, oil and gas production (including offshore field development)

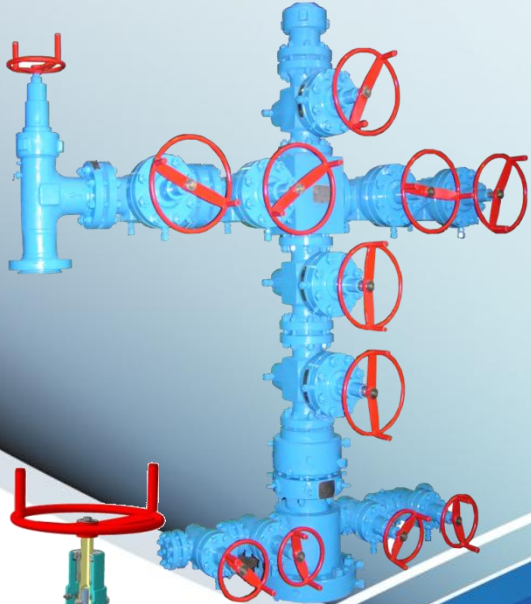
We supply titanium casting to different regions of Russia, as well as abroad, with India, Belgium, Italy, Spain, Norway, Australia and USA being our customers.





## OIL AND GAS EQUIPMENT

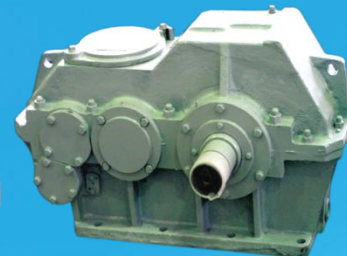
TODAY JSC «ZELENODOLSK PLANT NAMED AFTER A.M.GORKY» HAS MORE THAN 25 YEARS EXPERIENCE IN THE FIELD OF OIL AND GAS EQUIPMENT FORLEADING OIL AND GAS COMPANIES OF RUSSIA



The factory shop have been modernized with high-tech processing equipment of leading companies

### THE PLANT PRODUCES :

drilling equipment; spare parts and components for valves, pumps; discharge fittings for water injection into oil reservoirs; casing connections; gas-well wellhead connection; equipment for offshore oil and gas platforms; gearboxes for chain drives; pipe fittings; well-workover rigs; flowing wellhead equipment and other products.

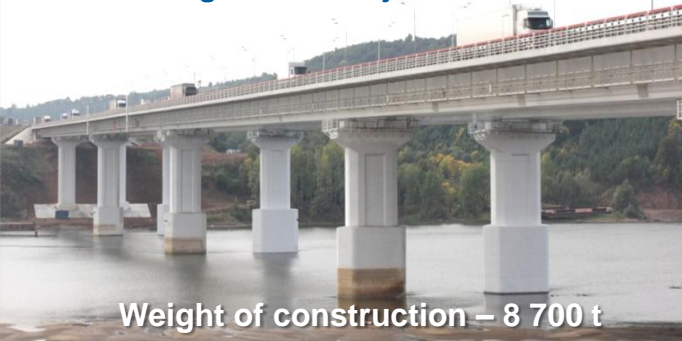






# LARGE-SIZE METAL STRUCTURES

**METAL STRUCTURES**  
for the bridge over the Vjatka river



Weight of construction – 8 700 t

**METAL STRUCTURES** for  
“Millenium” Bridge over the Kazanka  
river



Weight of construction – 11 250 t  
Length– 853 m  
Breadth– 40 m

**METAL STRUCTURES** for  
the bridge over the Kama river



Total weight– 20 050 t  
Length– 838 m  
Breadth– 13,5 m

During the construction of the bridge across the Kama river near the village of Soroch'i Gory, the first object in which the plant took part as the supplier of superstructures. For the first time in Russia the unique technology was applied with regard to the erection of the bridge using enlarged blocks weighing up to 120 tons, which were manufactured at the plant and delivered by waterway to the place of mounting.

**METAL STRUCTURES**  
for the railway to “Aeroexpress”  
terminal of Kazan airport



Weight of construction – 4 094 t

**METAL STRUCTURES**  
for oil processing and petrochemical plants  
in Nizhnekamsk



Weight of construction – 1 211 t

**METAL STRUCTURES**  
for transport junction in Kazan



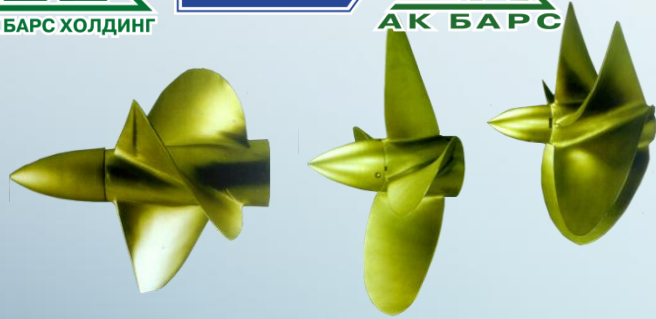
Weight of construction – 822 t

Since 1997, the plant has mastered the production of large metal constructions for bridges. The total weight of metal constructions manufactured during the period from 1997 till 2016, is more than 50 thousand tons.

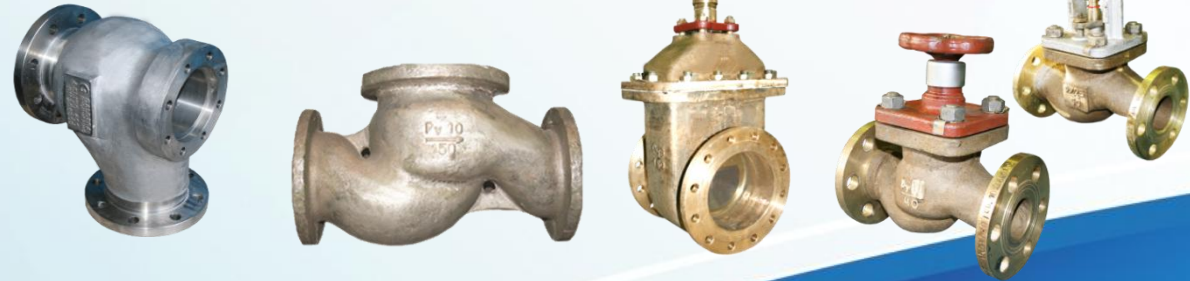




# DECK MACHINERY



## MARINE EQUIPMENT



## DECK EQUIPMENT



### WINCHES FOR FISHING VESSELS:

- WINCHES
  - SWEEP LINE WINCHES
  - LONG-LINE WINCHES
  - GILSON WINCHES
  - COD END WINCHES
  - OUTHAUL WINCHES
  - AUXILIARY WINCHES
  - NET SOUNDING WINCHES
  - ANCHOR-MOORING WINCHES
  - WIRE ROPE ROLLERS
- FOR FISHING VESSELS:
- TRAWL WINCHES







THE PLANT PRODUCES SHIPBOARD AND CABINET-TYPE FURNITURE, AS WELL AS UPHOLSTERED FURNITURE FOR SHIPS, VESSELS, AND WATERBORNE VEHICLES OF ALL TYPES AND PURPOSES



Basic materials used for manufacturing of shipboard and cabinet-type furniture are laminated wood particle boards of E1, E2 classes and sandwich panel (TU 5.966-11586-95). Variety of colors and patterns of laminated plastics used for furniture production contributes to comfort of shipboard spaces and provides good rest for the crew.

MODERNIZED  
FURNITURE PRODUCING AND  
WOODWORKING WORKSHOP





**WE ARE LOOKING FORWARD TO MUTUALLY  
BENEFICIAL COOPERATION!**

JSC «Zelenodolsk plant named after A.M.Gorky»  
5 Zavodskaya Str., Zelenodolsk, Republic of Tatarstan, the Russian Federation  
tel.:+7(84371)576 10, fax:+7(84371) 578 00  
e-mail: [info@zdship.ru](mailto:info@zdship.ru), [WWW.ZDSHIP.RU](http://WWW.ZDSHIP.RU)